



文藻外語大學
WENZAO URSULINE
UNIVERSITY OF LANGUAGES

**International Program of
Applied Chinese Studies
(Bachelor's Degree)
in Academic Year 2025/2026**

Address: 900, Mintsu 1st Road, Kaohsiung, 807679, Taiwan R.O.C

Tel: +886-7-342-6031ext2641~2645

Fax: +886-7-350-8591

Email: overseas.student@mail.wzu.edu.tw

Website: <https://d021.wzu.edu.tw>

Table of Contents

I. ADMISSION SCHEDULE	1
II. ABOUT WENZAO URSULINE UNIVERSITY OF LANGUAGES	2
1. College Introduction.....	3
2. Curriculum and Career Development	5
3. Living and Information	5
III. REGISTRATION	5
1. Application Methods.....	5
2. Require Documents.....	7
3. Department Information.....	9
4. Tuition.....	10
5. Scholarships	12
IV. FORMS.....	14
Attachment-1 Declaration for International Students	14
Attachment-2 Personal Data Collection Agreement	15
Attachment-3 On-Camp Dormitory	17
Attachment-4 Off-Campus Daya International Apartment.....	18
Attachment-5 On-Campus Dormitory Accommodation Application	19
Attachment-6 Daya International Apartment Reservation Form.....	20
Attachment-7 Scholarship Application Form	24

I. Admission Schedule

Item	Date
Registration	December 1, 2024 to June 30, 2025
Scholarship Application Period	December 1, 2024 - June 30, 2025 Applications before May 31, 2025 are prioritized for scholarship eligibility reviewing.
Application Review	Before Mid-July, 2025
Announcement of admission results	Before July 31, 2025
Mailing admission letters	Before August 15, 2025
Beginning of the semester	Mid-September 2025

Note: This schedule is subject to change. Please refer to the announcement on the school website.

Contact Information
Application Consultation (Section of Overseas Student Affairs, OICC) Tel: +886-7-342-6031#2641~2645 Email: overseas.student@mail.wzu.edu.tw Fax: +886-7-350-8591 Website: http://d021.wzu.edu.tw

Note: Our school admits international students and manages the entire recruitment process on our own. We do not authorize any external agencies, legal entities, groups, or individuals to handle the recruitment process other than promotion of the school, provision of consultation, and preparation of authenticated documents, and any other necessary procedures involved in the application process.

II. About Wenzao Ursuline University of Languages

Wenzao Ursuline University of Languages was founded in 1966. Wenzao is the first and the only university of languages in Taiwan with educational principles of valuing the uniqueness of each student. We pride ourselves on offering our students whole-person education that allows students to explore their potential, acquire cross-disciplinary, multicultural knowledge, cultivate their characters, develop their leadership and communication skills, and make contributions to the society.

Wenzao is located in the seaport city of Kaohsiung. It has advanced urban public facilities, convenient transportation, and complete living functions. The University offers 7 master's programs and 13 bachelor's programs in English, German, Spanish, French, Japanese, Southeast Asian languages, teaching Chinese as a foreign language, translation and interpreting, foreign language instruction, international business administration, mass communication, and digital content management and application. Wenzao has also established and maintained collaborative relations with over 320+ universities and higher education institutions from 41 countries in Asia, America, Europe, Oceania and Africa. Collaboration between Wenzao and foreign universities and institutions covers various areas such as student & faculty exchanges, study visits, research and teaching collaboration, and 40 dual/triple-degree programs.

Wenzao is committed to cultivating second-specialization capabilities and fostering a development model that integrates language with professional skills to facilitate successful employment for our graduates. For 12 consecutive years, we have been recognized by a leading Taiwanese professional institution as the private vocational university with the strongest international outlook and foreign language proficiency in Taiwan.

In the 1111 Job Bank's "2024 Most Preferred Universities by Enterprises" survey, Wenzao ranked 3rd nationally (and 1st among all private vocational universities) in the category of "Top 5 Job Performance of Foreign Language Graduates." We also ranked 10th nationally in the category of "Most Preferred Private Technological Universities." In the 104 Job Bank's "2024 University Brand Power Survey," Wenzao ranked 2nd nationally (and 1st among all private vocational universities) in the category of "Foreign Language Graduates Best Meeting Corporate Expectations for University Brand Power." Furthermore, in Cheers Magazine's "2024 Most Preferred University Graduates by Enterprises" survey, Wenzao ranked among the top 30 universities nationwide (25th overall) and 2nd among private vocational universities in the category of "Top 30 Most Preferred University Graduates by 2,000 Large Enterprises." In Common Wealth Magazine's "2024 Best Universities Ranking," Wenzao ranked 1st nationally

(regardless of public or private status) in the category of "International Teacher-Student Ratio" for five consecutive years. We also ranked 12th among all public and private universities nationwide (and 1st among private vocational universities) in the category of "Top 30 Internationalization," and 25th among all public and private vocational universities in the category of "Top 30 Vocational Universities." These accolades underscore Wenzao's accumulated strength in both Chinese and foreign languages, solidifying our leading brand position.

1. College Introduction

The Mandarin College at Wenzao Ursuline University of Languages brings together the expertise of Mandarin language educators from across the university to establish a foothold in Mandarin-speaking territories around the world. Our college has already established partnerships with prestigious institutions such as the University of St. Thomas in Texas, Southern Illinois University, and Hunter College of the City University of New York in the United States. Our focus is on promoting Mandarin at the college level, using the strengths of our faculty and students to explore the Mandarin markets in America, Europe, and Asia. We leverage our niche in multilingual education and combine the advantages of language and digital humanities to form a strong Mandarin team.

Our college boasts exceptional academic and instructional faculty in Mandarin, committed to the comprehensive cultivation of Mandarin talents. Apart from the Applied Chinese Studies program (bachelor's degree and master's degree), we offer two professional Mandarin teaching credit programs to nurture professional teaching capabilities, establishing a holistic mechanism for cultivating Mandarin talents.

In addition to face-to-face Mandarin courses, we have pioneered a complete online Mandarin teacher training and certification program. Our curriculum extends to Business Chinese and Mandarin for children and toddlers, with a commitment to developing diverse Mandarin teaching materials. In recent years, we have also supported the Overseas Community Affairs Council in establishing a "boundaryless and comprehensive" Taiwanese Mandarin brand across Americas, Europe, Australia, and Asia.

Our college and its affiliated units undertake a variety of projects, including the Taiwan Huayu BEST Program (from Phase 1 to the present), the U.S. Department of State's NSLI-Y high school scholarship program, and the U.S. Department of Defense's Project Go Mandarin learning project. These projects have achieved nationally recognized performance. The Mandarin Center, which is directly under our college, continues to renew itself and enhance Wenzao's years of internationalization benefits. It holds a significant reputation and

performance nationwide and is a leading institution for the Ministry of Education's dispatch of Mandarin teachers abroad. The center annually cultivates the highest number of international talents for Taiwan, making it the cradle for nurturing the university's international Mandarin projects. The Mandarin College at Wenzao Ursuline University of Languages brings together the expertise of Mandarin language educators from across the university to establish a foothold in Mandarin-speaking territories around the world. Our college has already established partnerships with prestigious institutions such as the University of St. Thomas in Texas, Southern Illinois University, and Hunter College of the City University of New York in the United States. Our focus is on promoting Mandarin at the college level, using the strengths of our faculty and students to explore the Mandarin markets in America, Europe, and Asia. We leverage our niche in multilingual education and combine the advantages of language and digital humanities to form a strong Mandarin team.

Our college boasts exceptional academic and instructional faculty in Mandarin, committed to the comprehensive cultivation of Mandarin talents. Apart from the Applied Chinese Studies program (bachelor's degree and master's degree), we offer two professional Mandarin teaching credit programs to nurture professional teaching capabilities, establishing a holistic mechanism for cultivating Mandarin talents.

In addition to face-to-face Mandarin courses, we have pioneered a complete online Mandarin teacher training and certification program. Our curriculum extends to Business Chinese and Mandarin for children and toddlers, with a commitment to developing diverse Mandarin teaching materials. In recent years, we have also supported the Overseas Community Affairs Council in establishing a "boundaryless and comprehensive" Taiwanese Mandarin brand across Americas, Europe, Australia, and Asia.

Our college and its affiliated units undertake a variety of projects, including the Taiwan Huayu BEST Program (from Phase 1 to the present), the U.S. Department of State's NSLI-Y high school scholarship program, and the U.S. Department of Defense's Project Go Mandarin learning project. These projects have achieved nationally recognized performance. The Mandarin Center, which is directly under our college, continues to renew itself and enhance Wenzao's years of internationalization benefits. It holds a significant reputation and performance nationwide and is a leading institution for the Ministry of Education's dispatch of Mandarin teachers abroad. The center annually cultivates the highest number of international talents for Taiwan, making it the cradle for nurturing the university's international Mandarin projects.

2. Curriculum and Career Development

The school is located in downtown Kaohsiung, close to many department stores, shopping malls, the Arena, and the three bustling Business District. There are bus stops, MRT, High Speed Rail Station, and Taiwan Railway Station near the campus. The Airport MRT can go directly to the Arena Station. The living functions here are very good and convenient.

Our school has student dormitories and can provide accommodation applications. We can also assist with off-campus accommodation applications. For accommodation application and assistance, please refer to Attachment-3, -4, -5, and -6.

3. Living and Information

The school is located in downtown Kaohsiung, close to many department stores, shopping malls, the Arena, and the three bustling Business District. There are bus stops, MRT, High Speed Rail Station, and Taiwan Railway Station near the campus. The Airport MRT can go directly to the Arena Station. The living functions here are very good and convenient.

Our school has student dormitories and can provide accommodation applications. We can also assist with off-campus accommodation applications. For accommodation application and assistance, please refer to Attachment-3, -4, -5, and -6.

III. Registration

Admission to this international student program is by application only. We welcome applications from high school graduates (or equivalent) who are non-Taiwanese citizens. Applicants must possess at least Chinese language proficiency at the A1 level.

1. Application Methods

A. Application Date

Application: December 1, 2024 to June 30, 2025

Scholarship: Until June 30, 2025

B. Application Methods

- a. Complete the application online at Wenzao Section of Overseas Student Affairs (SOSA) before the deadline.



Online application:

https://web3.wzu.edu.tw/oc50_1907/index.php?c=registration&act=activity_list

- b. Register for only ONE account.

c. Upload all the supporting documents/files.

C. Admission Announcement: Before August 15, 2025

2. Require Documents

Item		General submitted documents of applicants
1	1 headshot photo	The digital file of the headshot should be uploaded to the application website.
2	1 photocopy of the academic credentials in English or Chinese	<p><u>Requirements:</u></p> <ol style="list-style-type: none"> 1. The photocopy has to be verified by the Embassy of the Republic of China, representative offices, offices, or other organizations authorized by the Ministry of Foreign Affairs (hereby named overseas embassies). 2. If the documentation of academic credentials is in other foreign languages beyond Chinese and English, the Chinese or English translated version should be attached additionally. 3. The applicants who are going to graduate this June may submit the photocopies of their student ID card or English certificates of current enrollment verified by the overseas embassies first, but the documentation of academic credentials that is verified by overseas embassies should be submitted when they enroll. <p>Remarks: The definition and the requirements of “academic credentials” are elaborated in Article V of "Wenzao Ursuline University of Languages Admission Regulations for International Students".</p>
3	1 photocopy of the high school official transcript in English or Chinese	<p><u>Requirements:</u></p> <ol style="list-style-type: none"> 1. The photocopy has to be verified by the overseas embassies. 2. If the official transcript is in other foreign languages beyond Chinese and English, the Chinese or English translated version should be attached additionally.
4	Financial proof or document with sufficient funds (USD3,500)	<p><u>Requirements:</u></p> <ol style="list-style-type: none"> 1. Officially offered by a bank to support an international student’s study in Taiwan. 2. A statement offered by a government, institution of higher learning or civic organization providing full scholarship or aid.

		Remarks: For Indonesian applicants, please provide Financial proof of USD 5,000 or a scholarship document from the government, institution of higher learning or civic organization when applying for the visa.
5	Other required documents	<ol style="list-style-type: none"> 1. A Chinese or English personal statement. 2. A Chinese or English study plan. 3. A copy of Chinese proficiency test record (e.g., TOCFL, New HSK), except for Chinese native speakers; Note. The minimum Chinese proficiency test score for entry should be A1 level or above of CEFR, e.g., TOCFL A1 (Level 1), HSK Level 3 (Novice High). The minimum Chinese proficiency test score for non-fresh graduates from Form 5 or Upper Form 6 for entry should be A2 level or above of CEFR, e.g., TOCFL A2 (LEVEL 2), HSK Level 4 (Intermediate High). 4. Copies of other foreign languages proficiency test records, other related licenses or certificates, outstanding performance and achievement works if applicable. 5. Declaration for International Students (Attachment-1) 6. Personal Data Collection Agreement (Attachment-2)
6	Legal documents of parents' consent	<p><u>Applicants under 18 years old are required to provide:</u></p> <ol style="list-style-type: none"> 1. The document of the power of attorney from the student's parents or other legal representative appointing a legal guardian in Taiwan verified by an overseas agency, which shows the eligibility of the guardian. 2. The notarized letter of agreement from a legal guardian in Taiwan.

Note.

(1) Chinese-taught program.

(2) Admission Quota: 25 (including SPM and STPM).

(3) For incoming high school graduates, conditional admission is possible with a Test of Chinese as a Foreign Language (TOCFL) score of A1. However, students must obtain a TOCFL score of A2 or above by the beginning of their second semester of freshman year,

otherwise they will be dismissed from the program.

(4)According to Article 26 of the University Act, the duration for pursuing a bachelor's degree is four to six years.

(5)Please submit your application via our application portal:




https://web3.wzu.edu.tw/oc50_1907/index.php?c=registration&act=activity_list

(6)Email: overseas.student@mail.wzu.edu.tw

Remarks:

Incorrect or untrue documents will result into immediate cancellation of the application, no appeals and grievances from the applicants is accepted.

3. Department Information

Department	QR code (Chinese)	QR code (English)	Instagram
International Program of Applied Chinese Studies			

4. Tuition

- A. The tuition and miscellaneous fees for freshmen admitted in the current academic year will be announced on the Tuition Fees section (<http://c010.wzu.edu.tw/category/127912>) after approval from the Ministry of Education.
- B. Attached is the tuition and miscellaneous fees standard for undergraduate students per semester in the previous semester for your reference. Please note that the academic year is divided into two semesters, and all fees are denominated in TWD.

Standards for Charging Tuition and Incidental Fees of the 2024/2025 Academic Year of Wenzao Ursuline University of Languages. Standards for tuition and incidental fees (currency: NT\$)						
Program	Tuition	Incidental fees	Charges for use of computers and network communications	Student insurance	Total	Note
First year of the 4-year college program	39,956	12,588	1,000	695	54,239	NT\$1,544 per credit; the calculation of the credit fee should be based on credits taken.
Second, third and fourth years of the 4-year college program	39,956	12,588	300	695	53,539	
<p>Other fees</p> <ol style="list-style-type: none"> 1. Dormitory fee: NT\$12,000 per semester. 2. Charges for the use of computers and network communications: should be fixed according to the year of studies and department a student is in. Those who retake a course, make up credits, or postpone their graduation are exempt from these charges. 3. Student group insurance premium is NT\$ 695 per semester. 4. Students who are doing an off-campus internship for a whole semester should pay full tuition and four-fifth incidental fees. 5. Please refer to the Wenzao Ursuline University of Languages Academic Policies for other regulations 						

Criteria Table of Tuition Fee Refunds	
Fee Items Time of Withdrawal	Tuition, miscellaneous fees and other fees
1. Deferring your studies or withdrawing from school before the registration day.	No payment required. Those who have already paid will be fully refunded.
2. Deferring your studies or withdrawing from school after the registration day but before the school opening day	Two-third of tuition and full amount of the miscellaneous and other fees will be refunded.
3. Deferring your studies or withdrawing from school after the school opening day but before 6 th week of the semester.	Two-third of tuition as two-third of miscellaneous and other fees will be refunded.
4. Deferring your studies or withdrawing from school between the 7 th week and 12 th week of the semester	One-third of tuition as well as one-third of miscellaneous and other fees will be refunded.
5. Deferring your studies or withdrawing from school in or after the 13 th week of the semester.	No refunds

5. Scholarships

A. The amount of a scholarship is determined by the budget drafted every academic year, during which the University will award “full scholarships” , “half scholarships”, “25% scholarships”, “20% scholarships” and “15% scholarships “ in principle.

- a. Full Scholarships : Full scholarship awardees are granted the total amount of tuition and incidental fees for the current semester(recipients must fulfill 60 service hours during the semester).
- b. Half Scholarships : Half scholarship awardees are granted one half of the total amount of tuition and incidental fees for the current semester(recipients must fulfill 30 service hours during the semester).
- c. 25% Scholarships : 25% scholarship awardees are granted 25% of the total amount of tuition and incidental fees for the current semester (recipients must fulfill 20 service hours during the semester).
- d. 20% Scholarships : 20% scholarship awardees are granted 20% of the total amount of tuition and incidental fees for the current semester (recipients must fulfill 15 service hours during the semester).
- e. 15% Scholarships : 15% scholarship awardees are granted one half of the total amount of tuition and incidental fees for the current semester (recipients must fulfill 10 service hours during the semester).

B. Application procedure:

- a. International students should submit their applications to the Section of Overseas Student Affairs of the Office of International and Cross-Strait Cooperation upon applying for admission.
- b. Scholarship recipients are determined by the Recruitment Committee of the University.
- c. Criteria for continuing to receive scholarships are as follows:
 - (1)Full Scholarships: Scholarship recipients of the elite program must receive a grade of 70-79 in academic performance and conduct in the previous semester to receive a scholarship of half the amount of the tuition and incidental fees for the current semester (recipients must complete 30 service hours during the semester). Those receiving a grade of 80 or better in academic performance and conduct in the previous semester can continue to receive this scholarship (recipients must complete 60 service hours during the semester).
 - (2)Half Scholarships: Scholarship recipients of the elite program must receive a grade of 70 or better in academic performance and conduct in the previous semester to continue to receive this scholarship (recipients must complete 30 service hours during the semester).
 - (3)25% Scholarships: Scholarship recipients of the elite program must receive a grade of 68 or better in academic performance and conduct in the previous semester to continue to receive this scholarship (recipients must complete 20 service hours during the semester).

- (4) 20% Scholarships: Scholarship recipients of the elite program must receive a grade of 66 or better in academic performance and conduct in the previous semester to continue to receive this scholarship (recipients must complete 15 service hours during the semester).
- (5) 15% Scholarships: Scholarship recipients of the elite program must receive a grade of 65 or better in academic performance and conduct in the previous semester to continue to receive this scholarship (recipients must complete 10 service hours during the semester).
- (6) Recipients failing to meet the above criteria will not be granted scholarships. If they meet the above requirements and complete the required service hours in the next semester, they will be granted scholarships again.
- (7) International students who are already receiving a scholarship awarded by the government of the Republic of China (not including this scholarship) are not eligible.
- (8) Scholarship awardees who have not completed registration or enrollment deferment procedures for the current academic year will lose their eligibility to receive scholarships.
- (9) Scholarship awardees who have provided forged or false information lose their eligibility to receive scholarships. Any amount of scholarship money awarded must be returned.

IV. Forms

Attachment-1 Declaration for International Students

1. The undersigned applicant, satisfy the Regulations Regarding International Students Undertaking Studies in Taiwan as an international student. I guarantee that I have neither overseas Chinese status nor R.O.C. citizenship as referred to in Article 2 of the Nationality Act, or have I been an R.O.C. national in the last eight years. According to Article 2 of the Nationality Act, a person shall have the nationality of the Republic of China under any of the conditions provided by the following subparagraphs:
 - A. His / Her father or mother was a national of the Republic of China when he/she was born.
 - B. He/ She was born after the death of his/ her father or mother, and his/ her father or mother was a national of the Republic of China at the time of death.
 - C. He/ She was born in the territory of the Republic of China, and his/ her parents can't be ascertained or both were stateless persons.
 - D. He/ She has undergone the nationalization process.
2. The diploma I provided (secondary degree diploma for applying for undergraduate program, bachelor or master's degree diploma for graduate program)is recognized by the Ministry of Education and verified by the Taiwan's overseas representative office. Upon registration, a photocopy of the certificate of diploma obtained from a foreign education institution and verified by the Taiwan's overseas representative office shall be submitted with a notarized translation in either Chinese or English.
3. I have never been expelled from other colleges and universities of the Republic of China. Should I breach any of the regulations, I will be denied admissions and student status.
4. I agree to authorize Wenzao Ursuline University of Languages to verify any information provided above. If any of it is found to be false, I have no objection to being deprived of registered student status.

Applicant's signature:

Date:

Attachment-2 Personal Data Collection Agreement

According to the Personal Data Protection Act, Wenzao Ursuline University of Languages (hereinafter as WZU) issues its statement of personal data protection and collection agreement to notify you of your responsibilities and rights and solicit your consent to the collection, processing and use of your personal data by WZU. Your signature below indicates that you have read, understood and accepted the contents set forth in this agreement.

1. Basic Data Collection, Renewal and Management

- A. WZU will collect, process, and use your personal data, personal insurance and student academic record in accordance with the Personal Data Protection Act and relevant laws and rules enacted in Taiwan, the Republic of China.
- B. Please provide your accurate, latest and complete personal data.
- C. Your personal data collected by WZU to facilitate its administration includes the information in the columns marked as required on the form.
- D. Please inform WZU of any change to your personal data to maintain the latest information.
- E. You may lose certain rights or benefits if you provide incorrect, untrue, outdated or incomplete information.
- F. According to the Personal Data Protection Act (ROC), you are entitled to make the following requests:
 - a. To check or review the collected data.
 - b. To receive a photocopy of the collected data.
 - c. To supplement or revise the collected data.
 - d. To cease the collection, processing or use of the collected data.
 - e. To delete the collected data.

When exercising the above right, a candidate shall submit application after his/her identity has been verified in accordance with the regulations of this university. If an application is made by an entrusted person, a letter of authorization shall be submitted together with the identification document of the entrusted person for verification. However, WZU may reject your requests in order to meet the administrative needs of its offices and institutes. Moreover, should you suffer any losses due to such requests; WZU shall not be held responsible for any compensation.

G. Purpose of Personal Data Collection

- H. WZU collects your personal data to meet the needs of educational administration.
 - I. We will solicit your consent in a written form in advance before using your personal data to serve a purpose other than the one specified in Item (I) of this article. While you may refuse to provide your personal data to WZU, you may lose certain rights or benefits as a consequence.
- ### 2. The period within which the personal data can be used

Unless otherwise stipulated by the law or the central competent authority in respect of the retention period of personal information obtained from the holding of examination, the retention period of the personal information by the University shall be the time required for the above purposes for

collection to be fulfilled.

3. The region where the personal information is used : ROC.
4. Basic Information Security Should your personal information be stolen, disclosed, altered or infringed upon due to the violation of the Personal Data Protection Act by WZU the occurrence of any natural disasters, incidental changes or other unavoidable circumstances, WZU shall inspect the cause and inform you by phone, mail, email or website notice.
5. Validity of Agreement
6. Your signature on this agreement indicates that you have read, understood and accepted its contents.
7. WZU is entitled to amend the contents of this agreement, and any amendments will be publicized on the WZU website. Should you disagree with any amendments, please exercise your right to request that WZU discontinue to collect, process or use your personal data according to Item VI of Article I. Otherwise, you are considered to have agreed to the amendment.

Applicant's Signature: _____

Passport number:_____

Date (YYYY/MM/DD): _____

Attachment-3 On-Camp Dormitory



1. The fee of the accommodation for one academic year is NTD 24,000 (not include summer and winter vacations). You have to pay NTD 5,000 deposit. After the end of the academic semester, we will return NTD 5,000 back to you.
2. Due to the limited capacity of on-campus dormitory (4 persons per room), please remit dormitory fee (NTD 17,000/semester) in advance to make a reservation.
3. Each room is a suite for four people, including independent bed, desk and wardrobe. Furthermore, there are two rooms for students with disabilities, each suite for three students.
4. There is a studying room on each floor, which provides students with an comfortable environment to study and surf on the net.
5. The dormitory is equipped with air-conditioning (tenants need to buy the card) and 24hours hot water supply.
6. Curfew hours are from 23:00 to 06:30. Only entering is allowed before 23:00.
Note: If you want to stay overnight outside the dormitory, hand in the Regular Late Return Application to the office before 22: 00.
7. Room check randomly and evaluation will be performed from Monday through Thursday.
8. At the end of every semester, the room cleaning must be thoroughly conducted before moving out. NTD 500 will be deducted as the charge of cleaning in case that the cleaning result does NOT meet the inspector's requirements.
9. Without teacher's consent, changing room or bed allocated is not allowed.
10. The deposit shall not be returned to those who move out for personal reason during the semester.
11. Smoking, alcohol, gambling and lighters are strictly banned on campus and dormitory.

For more information, please check the below website: <http://c012.wzu.edu.tw/category/134992#>

Attachment-4 Off-Campus Daya International Apartment



Note: Rental does not include electricity cost and water fee.

1. 24 hours building managers and good security.
2. At the end of every semester, the room cleaning must be thoroughly conducted before moving out.
3. The deposit shall not be returned to those who move out for personal reason during the semester.
4. 5-minute walking distance from Wenzao Ursuline University of Languages.
5. Address of DaYa International Apartment:
No.2, Ln. 556, Dingjinhou Rd., Sanmin Dist., Kaohsiung City 807,Taiwan (R.O.C.)

For more information, please check the below website:

<http://www.daya-international.com.tw/Kaohsiung/room.html>

Attachment-5 On-Campus Dormitory Accommodation Application

I, _____ (full name) hereby confirm to stay at: On-campus Dormitory (four people/room One academic year is NTD 24,000 (not include summer and winter vacations) I also hereby assert that I have read the On-Campus Dormitory Regulations and agree to obey the regulations during my stay at the dormitory. Should I do anything against the regulations, I will accept the penalty as stated in the regulations. I understand that the deposits shall be refunded to me on condition that the check-out procedure is duly completed.

Applicant's Signature:

Date: (yyyy/mm/dd)

Attachment-6 Daya International Apartment Reservation Form

Applicant Affiliation	<input checked="" type="checkbox"/> Student		Nationality	
Gender	<input type="checkbox"/> Male <input type="checkbox"/> Female		Contact email	
Tenant's Name	(Surname)	(First Name)	Tenant's Tel	
Arrival Date	(Year)	(Month)	(Day)	Departure Date (Year) (Month) (Day) / /
Staying month	Number of Person	Check-in/Check-out Date/Time Confirmation	Check-in Date/Time	
			Check-out Date/Time	
Number of Room/Deposit	Twin room (2 single beds)		Single room	
	<input type="checkbox"/> NT\$8,500__Room(s)		<input type="checkbox"/> NT\$6,500__Room(s)	
Payer	<input type="checkbox"/> Applicant		Payer name	
	<input type="checkbox"/> Student's Parents/Friends			
Type of Payment	<ul style="list-style-type: none"> ■ We will receive the reservation form and confirm that there is no problem with your reservation information. We will provide a link to pay by credit card. ■ The deposit fee is uniformly \$8,000 (for any room type).(2% is the handling fee, Daya actually received \$7840) ■ The remaining deposit amount will be paid in cash upon arrival. ■ After moving in, rent is mainly paid in cash/remittance. ■ After swiping the card, please send it back to us with the successful card swiping record to complete the booking process. 			
Signature of Applicant			Authorized Signature	

Booking process:

1. Email us the booking form.
2. Receive a booking confirmation notice.
3. Send the deposit and return the receipt.
4. Complete the reservation.

Daya International Apartment

Reservation Information:

1. Email: daya12921163@gmail.com Line ID: @cwa0798w
(Be sure to join, and post back your name)
2. Please show your ID (Passport) and pay in full when you check-in.
3. At least 4 months during the reservation period. Deposit : 2 months rent. When you check out, We will deduct \$1,000 from the deposit as the cost of air-conditioning cleaning and painting.
4. No smoking inside the building, we will charge \$ 5000 as the penalty.
5. A double room has two beds; please find roommates on your own, Daya does not have matching service.
6. You must wait for Daya to send back the booking confirmation before remitting the deposit.
7. If you remit the deposit without Daya's consent, Daya has the right to refund the deposit (The handling fee will be absorbed by the remitter).
8. Special services for foreign students: Mattresses will be provided. However, if the mattress comfort does not meet your needs, we cannot replace it for you. Please purchase a mattress that suits you.
9. Cancellation and refund cannot be made after swiping the card, please be sure to confirm before booking.

Brief introduction of room types



Extra large single room:23.142-26.448(square meters)

Equipment: two desks,two wardrobes,air conditioning,television,refrigerator, double bed frame (without mattress)

- The rent includes management fees,garbage trucks,cleaning fees,networks,locomotive parking spaces,and cable TV.



Extra large single room:23.142(square meters)

Equipment:desk,wardrobe,air conditioning,television, refrigerator,double/single bed frame (without mattress)

- The rent includes management fees,garbage trucks, cleaning fees,networks,locomotive parking spaces,and cable TV.



large single room:19.836(square meters)

Equipment:desk, wardrobe,air conditioning,television, refrigerator,double/single bed frame (without mattress).

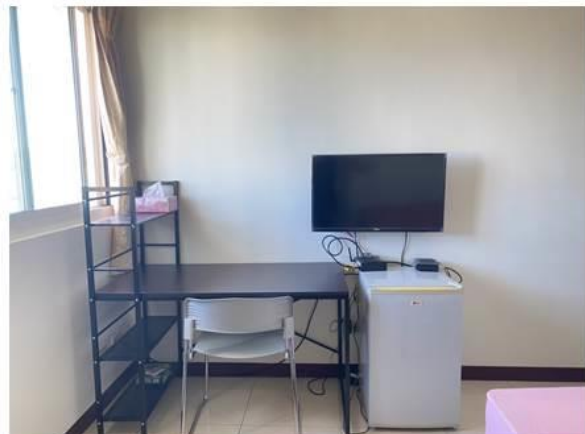
- The rent includes management fees,garbage trucks, cleaning fees,networks,locomotive parking spaces,and cable TV.



Small room: 16.530(square meters)

Equipment:desk, wardrobe,air conditioning,television, refrigerator, bed frame(without mattress).

The rent includes management fees,garbage trucks,cleaning fees,networks,locomotive parking spaces,and cable TV.



Attachment-7 Scholarship Application Form



Date : YYYY / MM / DD

<u>Name</u>	<u>Nationality</u>
Have you ever studied Chinese before? <input type="checkbox"/> Yes <input type="checkbox"/> No If yes, when and for how long? _____	
Which kind of Chinese do you learn? <input type="checkbox"/> Traditional characters <input type="checkbox"/> Simplified characters	
Self-introduction	
Please briefly state your study plan at our school	
Other extra-curricular activities/ awards/ outstanding performance Please upload the relevant supporting documents to the application website for the scholarship review process.	